

# PRODUCT GUIDE

Architectural & Facade Lighting



Designed to  
illuminate and inspire.



Transform architectural masterpieces into dazzling displays of performance art with best-in-class lighting solutions from Lumascape. Each future-ready luminaire delivers top performance in every application. For high-speed digital dimming and color-changing capabilities, add PowerSync™ technology. Learn more at [lumascape.com](https://lumascape.com).



Quadralux Q6



Royal Opera House Arcade, London, United Kingdom

 LUMASCAPE

# FACADE

powersync™ 4



Quadralux **Q8** LS9180

16,760 lm\*, < 160 W

Single Color RGBW RGBW Tunable White

powersync™ 4



Quadralux **Q6** LS9160

8,280 lm\*, < 86 W

Single Color RGBW RGBW Tunable White

powersync™ 4



Quadralux **Q4** LS9140

5,800 lm\*, < 58 W

Single Color RGBW RGBW Tunable White

powersync™ 4



Quadralux **Q2** LS9120

3,340 lm\*, < 35 W

Single Color RGBW RGBW Tunable White

powersync™ 4



Linealux **L5** LS9050

2,163 lm/ft\*, < 23 W/ft

Single Color RGBW RGBW Tunable White  
Available in 1 ft, 2 ft, 3 ft, 4 ft

powersync™ 4

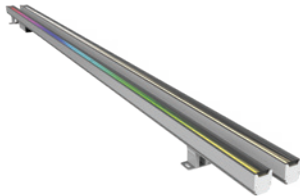


Linealux **L3** LS9030

1,320 lm/ft\*, < 15 W/ft

Single Color RGBW RGBW Tunable White  
Available in 1 ft, 2 ft, 3 ft, 4 ft

powersync™ 4



Linealux **L1** LS9010

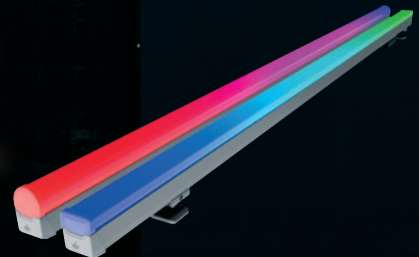
503 lm/ft\*, < 7 W/ft

Single Color RGBW RGBW Tunable White  
Available in 1 ft, 2 ft, 3 ft, 4 ft

# Designed to Perform and Excite



The **Vestalux V2** is a high-output, direct view linear outliner featuring Lumascope's UVGuard™ Technology. The linear offers best-in-class photometric performance, with over 1,200 lm from a 4' (1.2 m) RGBW, and over 2,400 lm from a white luminaire. With Vestalux V2 luminaires on your project, imagination is the only limit!



Rialto Towers, Melbourne, Australia

 LUMASCAPE

# DIRECT VIEW

powersync™4



Faisca **F6** LS9260

2,720 lm\*, ≤ 20 W

Single Color RGBW RGBW Tunable White

powersync™5



Faisca **F3** LS9230

365 lm\*, < 5 W per node

Single Color RGBW RGBW Tunable White

powersync™4

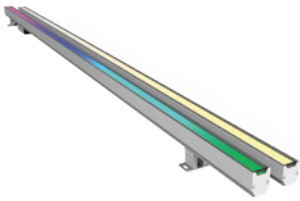


Vestalux **V2** LS9016

588 lm/ft\*, < 7 W/ft

Single Color RGBW RGBW Tunable White  
Available in 1 ft, 2 ft, 3 ft, 4 ft, 5 ft

powersync™4



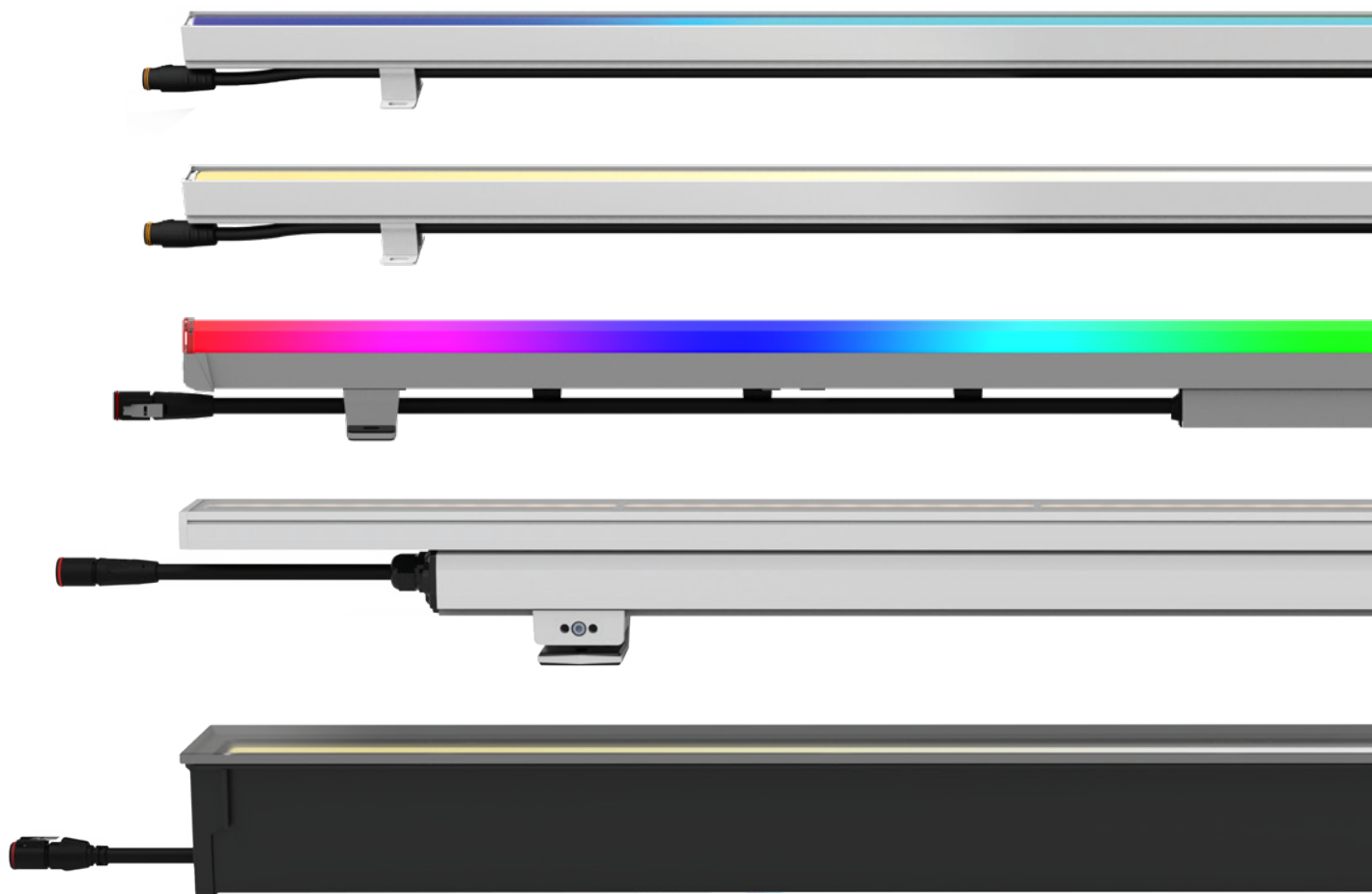
Vestalux **V1** LS9015

485 lm/ft\*, 7 W/ft

Single Color RGBW RGBW Tunable White  
Available in 1 ft, 2 ft, 3 ft, 4 ft, 5 ft



# Unleash your *creativity* with the Complete Linear Solution



## Complete Linear Solution

---

Transform your space through light with Lumascape's full range of facade, direct view and in-ground linear solutions. From performance graze to direct view and cove applications, Lumascape has you covered. With the command and flexibility of PowerSync™ Technology, these best-in-class performance products add significant capability to the Lumascape product portfolio. Find your perfect linear solution at [lumascape.com](https://lumascape.com)



Illuminate with perfection,  
*from the ground up*

With best-in-class **in-ground luminaires** from Lumascope, things are always looking up. As a leading developer of in-ground lighting technology for 30 years, we're proud to provide a complete spectrum of robust and reliable luminaires backed by field-proven performance and maximum longevity. Find your perfect in-ground at [lumascope.com](https://lumascope.com).



Eastmark Great Park, Mesa, Arizona, USA

 LUMASCOPE



# IN-GROUND

powersync™ 4

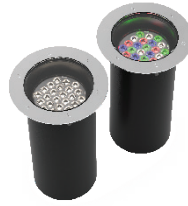


Terraluz **TE5** LS3150

1,945 lm/ft\*, < 24 W/ft

Single Color RGBA RGBW Tunable White  
Available in 1 ft, 2 ft, 3 ft, 4 ft  
Continuous, T&L Configurations

powersync™ 4



Erden **E8** LS3080

3,790 lm\*, ≤ 40 W

Single Color RGBA RGBW Tunable White

powersync™ 4



Erden **E6** LS3060

2,240 lm\*, < 25 W

Single Color RGBA RGBW Tunable White

powersync™ 4



Erden **E4** LS3040

1,910 lm\*, < 20 W

Single Color RGBA RGBW Tunable White

powersync™ 4



Erden Brass **EB3** LS3330

1,420 lm\*, < 15 W

Single Color RGBW



Evoca **EV4** LS393LED

550 lm\*, < 8 W

Single Color Blue RGB



Evoca **EV7** LS793LED

906 lm\*, < 10 W

Single Color Blue RGB



Vedi **VD1** LS563LED

260 lm\*, < 3 W

Single Color Blue RGB



Vedita **VE3** LS9403LED

184 lm\*, < 3 W

Single Color Blue  
Includes pre-installation sleeve



Vedita **VE1** LS9401LED

184 lm\*, < 3 W

Single Color Blue  
Includes pre-installation sleeve



Via **VI1** LS553LED

184 lm\*, < 3 W

Single Color Blue Turtle-Friendly  
Includes pre-installation sleeve

# Illumination that's always one step ahead

Robust, easy-to-install wall-mounted luminaires from Lumascope are expertly engineered to increase pedestrian safety, define spaces, and enhance architectural elements while delivering long-lasting performance in busy outdoor environments. Choose from a variety of high-output luminaires in a range of styles to seamlessly integrate wall lighting into classic and contemporary settings.



Wall-Mounted Luminaires

 LUMASCOPE

# WALL-MOUNT

powersync™4



Centria **C4** LS1010

2,110 lm\*, < 25 W

Single Color RGBW RGBW Tunable White

powersync™4



Centria **C3** LS1015

2,110 lm\*, < 26 W

Single Color RGBW RGBW Tunable White



Omnio **OM2** LS411COB

1,410 lm\*, < 26 W

Single Color



Omnio **OM1** LS411LED

940 lm\*, < 15 W

Single Color RGB



Nook **NK4** LS1265

Up to 1,755 lm\*, < 25 W

Single Color



Nook **NK2** LS1260

600 lm\*, < 10 W

Single Color



Bezel **BZ2** LS1230

825 lm\*, < 12 W

Single Color RGB



Ridge **RG4** LS1282

700 lm\*, < 10 W

Single Color



Vedita **VE6** LS9406LED

184 lm\*, < 3 W

Single Color Blue

# GROUND MOUNT

powersync™4



Centria **C1** LS2010

2,110 lm\*, < 25 W

Single Color RGBW RGBW Tunable White

powersync™4



Centria **C2** LS2020

2,110 lm\*, < 25 W

Single Color RGBW RGBW Tunable White



Omnio **OM2** LS411COB

1,410 lm\*, < 26 W

Single Color



Omnio **OM2** LS411COB

940 lm\*, < 15 W

Single Color RGB



Vedita **VE2** LS9402LED

184 lm\*, 2.8 W

Single Color Blue

powersync™4



Woda **W3** LS5030

2,170 lm\*, < 25 W

Single Color RGBW

powersync™4



Woda Brass **WB3** LS5330

1,440 lm\*, < 15 W

Single Color RGBW

## BOLLARDS & PATHWAY

---



Rise **RS8** LS2388

Up to 2,977 lm\*, < 49 W

■ Single Color



# UNDERWATER



Tristar **TR1** LS265LED

2,160 lm\*, < 32 W  
 ■ Single Color ■ Blue ■ RGB



Star **ST1** LS375LED

838 lm\*, < 11 W  
 ■ Single Color ■ Blue ■ RGB



Nero **NE1** LS333ANS-2LED

605 lm\*, < 8 W  
 ■ Single Color ■ Blue ■ RGB ■ Turtle-Friendly



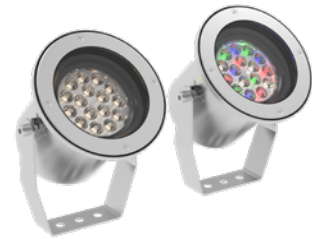
Nero **NE2** LS333ANS-2COB

1,080 lm\*, < 15 W  
 ■ Single Color



Nero **NE3** LS333ANS-2

■ Single Color  
 Not available in North America



powersync™ 4

Woda **W3** LS5030

3,590 lm\*, < 47 W  
 ■ Single Color ■ RGBW



powersync™ 4

Woda Brass **WB3** LS5330

2,590 lm\*, < 29 W  
 ■ Single Color ■ RGBW



Vedita **VE5** LS9405LED

184 lm\*, < 3 W  
 ■ Single Color ■ Blue  
 Includes pre-installation sleeve

# POWER & CONTROLS

powersync™4



Data Injector **PS4** LS6540

powersync™4



LV Data Injector **PS4** LS6550

powersync™5



LV Data Injector **PS5** LS6555

*For use with Faisca F3  
Architectural Marker Light Only*

## Intelligent Electronics, for LED luminaires



### What is PowerSync?

- » PowerSync was born from an industry need for a simplified, contractor-friendly installation without compromising the dimming quality.
- » PowerSync supports industry standard protocols: 0 to 10 V and DMX/RDM.
- » High-resolution dimming to 0.1%.
- » Installation of PowerSync requires only industry standard wiring methods and materials.
- » PowerSync uses a single, extra conductor to carry data — less copper and fewer connections versus other manufacturers using traditional control methods.
- » Consistent dimming performance, wiring, and installation across all PowerSync luminaires.

powersync™



[lumascap.com/technology](https://lumascap.com/technology)

# GLOBAL DISTRIBUTION NETWORK

---



## AUSTRALIA/ASIA PACIFIC

77 Brandl Street  
Eight Mile Plains, Queensland 4113  
Australia  
P: +61-7-3854-5000  
F: +61-7-3854-5001  
E: sales@lumascapeme.com



## EUROPE

E: salesEU@lumascapeme.com

## UNITED KINGDOM

E: salesUK@lumascapeme.com

## MIDDLE EAST

Dubai World Centre  
Building Block C, Office #432  
Dubai, United Arab Emirates  
P: +971-4-887-9951  
F: +971-4-887-9601  
E: sales@lumascapeme.ae



## NORTH AMERICA

1940 Diamond Street  
San Marcos, California 92078  
United States of America  
P: +1-650-595-5862  
E: info@lumascapeme.com